

## CEUs AVAILABLE FOR ELLA HAWES INSTITUTE WORKSHOPS

Issued by:  
University of Houston  
Clear Lake

Cost: \$20

### Procedure:

1. Workshop attendees interested in obtaining CEUs must sign up and pay \$20 at their first workshop (cash or check made payable to St. Luke's Day School).
2. Once signed up for CEUs, participants **must** sign in **and** sign out of each workshop for credit.
3. Each workshop is worth .2 CEUs; participants can get one (1) full CEU if they attend all five workshops.
4. CEUs are cumulative.
5. In June or July 2012, University of Houston-Clear Lake will mail participants a certificate for the **total** CEUs obtained.

## ELLA MARGARET HAWES 1938 - 1998

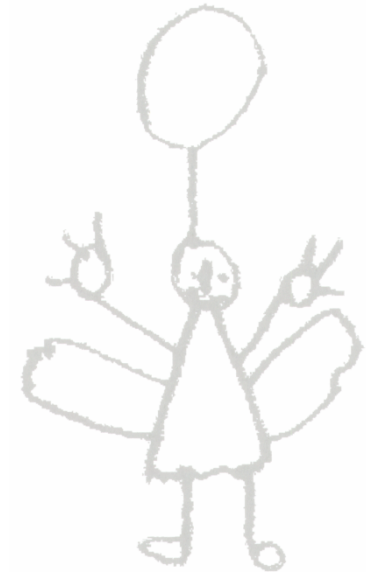
Ella Hawes was born in Michigan, came to Texas as a young bride, and raised her family in Houston. She was a lifelong educator and was Director of St. Luke's Day School at the time of her death in 1998.

She was a consummate professional, a mentoring teacher, a dedicated volunteer for children's causes, and an enthusiastic school director. She loved and respected all children, which was apparent to anyone who saw her kneel down to speak to a child.

Ella raised the bar in Early Childhood Education. She encouraged her staff to be the best they could be by providing opportunities for learning, whether by attending workshops or enrolling in college level courses. She offered similar types of opportunities for parents in her program by providing seminars as well as informal meetings to discuss important parental issues and answer questions.

This Institute, founded in 2002, is dedicated to the memory and legacy of Ella Hawes.

THE *ELLA HAWES* INSTITUTE  
for Early Childhood Educators



## 2011-2012 WORKSHOPS

**THE ELLA HAWES  
INSTITUTE  
FOR EARLY CHILDHOOD  
EDUCATORS**

**MISSION STATEMENT**

To enrich the lives of children throughout our community by offering affordable, top-quality continuing education for early childhood professionals.

Location: St. Luke's United Methodist Church  
3471 Westheimer

Cost per program: \$7 per person for teacher workshops

RSVP: 713-402-5030 -or-  
[dayschool@stlukemethodist.org](mailto:dayschool@stlukemethodist.org)

Training certificates issued by Ella Hawes Institute at the conclusion of each program

CEU's available for a \$20 fee; see back flap for more information

Questions?  
713-402-5030  
[dayschool@stlukemethodist.org](mailto:dayschool@stlukemethodist.org)

**2011-2012 WORKSHOPS**

**DEBBIE WEYMOUTH  
& PAM JONES**

**"Babies"**

Join us for the documentary "Babies" and a lively discussion of raising babies around the world.

Wednesday, September 28, 2011  
6:30-8:30P  
Rotunda

**PEGGY FORD**

**"Read a Good Book...  
Now Let's Cook"**

Learn to tie good literature to cooking activities—which will get all the senses involved!

Wednesday, November 30, 2011  
6:30-8:30P  
Rotunda

Visit the St. Luke's Day School Book Fair before the program!

**KATHY MITCHELL  
BROWN**

**"Woodworking Wonders"**

Enjoy pointers, safety tips, and creative ideas for woodworking in your classroom.

Wednesday, January 25, 2012  
6:30-8:30P  
Rotunda

**2011-2012 WORKSHOPS**

**GREGG CATALANO**

**"Becoming a More  
Creative Teacher"**

Learn to reach your full teaching potential by thinking differently and creatively.

Wednesday, February 29, 2012  
6:30-8:30P  
Rotunda

**BARBARA BRANDT**

**"Singin' and Swingin' in  
the Classroom"**

Two childhood favorites, zoo animals and singing, will inspire you to get your class up and moving throughout the day.

Wednesday, April 4, 2012  
6:30-8:30P  
Rotunda

**CHILD DEVELOPMENT  
ASSOCIATE TRAINING COURSE**

Contact 713-402-5030 for more information (Orientation is 9/13/11, First class is 9/20/11)

**EHI SPONSORED BY:**

**St. Luke's**  
DAY SCHOOL

  
University  
of Houston  
Clear Lake